

NAVIGATING THE INFORMATION UNIVERSE



Spring 2013 Newsletter

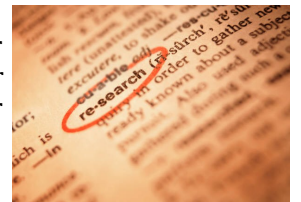
Welcome Jennifer Hicks!

GHL is excited to welcome Jennifer Hicks as our new Acquisitions and Technical Services Supervisor. Jennifer has been with us for 2.5 years as a student assistant, and, with some overlap, also worked at the Southwest Ohio Regional Depository (SWORD) on campus for 2.5 years. She is responsible for ordering materials and supplies for the library, cataloging items, paying our bills, assisting users at the InfoDesk, and managing the archives. She holds a BA in English from Miami University. Her email is hicksjl2@miamioh.edu and her phone is 513-727-3221.

Faculty Info Seeking—How do you use the library?

Have you recently published a journal article, conference paper, book chapter or book? Or are you working on research that you would like to publish in the future? The library is interested to learn how you complete your research and what types of resources you find most useful. We invite all full time and part time faculty to take a brief survey about your information seeking behavior. The survey can be found at <http://tinyurl.com/facultyinfoseeking>.

The library is also interested in displaying the research being done by our faculty. Please email Jessie Long at longjh@miamioh.edu with the titles or citations of any journal articles, conference papers, book chapters, books or other work that you have published within the last 2 years.



Embedded Librarians: What Students and Faculty Think

We share a lot of information prior to each semester on why faculty members should consider using an embedded librarian in their Niihka courses to assist students. For this newsletter, we're going to let students and faculty members from classes with an embedded librarian speak for themselves. These comments and responses were taken from a survey administered to 30 embedded librarian courses at the end of Fall 2012 (156 students and 10 faculty members responded):

- 79% of students clicked on library resources added to the Niihka course sites.
- 78% of students responded that those resources were new to them.
- 23% of students contacted an embedded librarian for assistance during the semester.
- "I found the embedded librarian to be very helpful. I was glad to always have that option available to me."
- "It showed me new ways to research."
- "She gave me good resources for my paper."
- 70% of faculty members agreed that the embedded librarian helped their students choose more narrowed and manageable topics.
- 80% of faculty members agreed that the embedded librarian helped their students find scholarly sources for their research projects.
- 90% of faculty members would collaborate with an embedded librarian in the future and would recommend the service to colleagues.
- "Students liked the quick links in Niihka."
- "[Students] often said they were working with librarian or had emailed librarian."
- "Several students felt more confident in this research task simply because they had support in the embedded librarian."

To schedule an embedded librarian for your Spring course, please contact Beth Tumbleson at tumbleb@miamioh.edu or 513-727-3232.

Spring Hours:

Mon—Thu 8am-9pm
Fri 8am-5pm
Sat Noon-4pm
Sun Closed

Meet your Library Staff

As Spring 2013 begins, we need to update our library staff responsibilities a bit. We want to make sure that you knew who to turn to for various library needs (be sure to see the Contact Us page on our website for pictures and contact information):



Beth Tumbleson, Assistant Library Director
Contact Beth to schedule an instruction session for your class or to arrange for an embedded librarian to work with your students in Niihka.

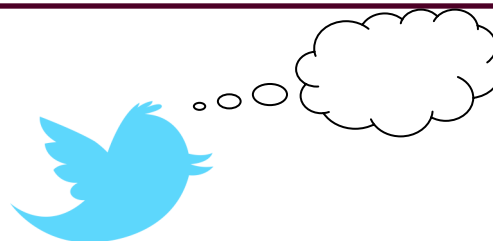
Chris Mull, Library Associate
Contact Chris for circulation or materials access questions, to place items on reserve, request items via interlibrary loan, or if you would like to have a DVD or video converted for students to access online through our Video on Demand service.

Jessie Long, Public Services Librarian
Contact Jessie to schedule an instruction session for your class, to work with your students in Niihka as an embedded librarian, or to suggest themes for library displays.

Jennifer Hicks, Senior Library Assistant
Contact Jennifer to order materials for the library collection or for questions about historical items in the archives.

John Burke, Library Director
Contact John to discuss the information needs of your research or your discipline and how the library can help meet them, for alternatives to standard textbooks, for general questions on library facilities and services, and for assistance in using Niihka.

Gardner-Harvey
Library
Miami University
Middletown
4200 N. University
Blvd.
Middletown, Ohio
45042-3497
513.727.3222
IM us @ askghl
Text us @
513-273-5360
Find more Gardner-
Harvey Library News at:
ghlibrarynews.blogspot.com



Tweet Your Dream

In the spirit of Dr. Martin Luther King, Jr. and the short messages of Twitter, the library invites you to Tweet your Dream. Travel, school, family, work, there is no end to what your dream may cover. We invite everyone, students, faculty and staff, to write out their dreams in 140 characters and email them to us at midref@lib.muohio.edu. All participants who submit a dream will be entered in a drawing to win a gift, so don't forget to include your name and email address with your dream. In February we plan to display submitted dreams in the library. Entries should be submitted by January 31st to be entered in the drawing. Happy dreaming!

Books, DVDs and More What would you like to order?

April 5, 2013 will be this year's deadline for placing acquisitions orders. Don't let your acquisitions budget slip away. Talk to your chair or coordinator about any library material that your department would benefit from. For any questions please contact Jennifer Hicks at hicksjl2@miamioh.edu or 513-727-3221.



Questions about using e-resources in your classes?

Have you thought about using library-subscribed or other e-resources in your courses? We have a huge array of resources on just about every topic that can be used in your Niihka course site or in the classroom. Contact John Burke at burkejj@miamioh.edu or 513-727-7293 to discuss the options available for your needs. Curious about copyright implications? A page on our library site discusses how to apply the principles of fair use when using copyrighted electronic resources (such as journal articles, e-book chapters, and images and videos from subscription databases and the free Web) in educational settings. Take a look at <http://www.mid.muohio.edu/library/fairuse.htm>



UNSHELVED by Gene Ambaum & Bill Barnes

www.unshelved.com

© Overdue Media LLC